



Shree Mahalaxmi Enterprises

ISO 9001:2015 certified company

Trusted partner in Cable Management



Scan for more information

ABOUT US

- ❖ Shree Mahalaxmi Enterprises (SME) was incorporated in the year 2010. Company is headed and managed by Mr. Vivek Telang, who has an experience of 25 years in plastic industry and well versed in technical expertise of the domain.
- ❖ We have been catering our clients in multiple sectors like Electrical, Industrial, Defence, Construction.
- ❖ SME is known as leading manufacturer and supplier of Cable management products especially Cable cleats.
- ❖ We have a range of Cable cleats like Plastics Two Bolt Cleat, Plastics Single Bolt Cleat, Aluminium Two Bolt Cleat, Aluminium Trefoil Cleat, Aluminium Claw Cleat.
- ❖ SME has been supplying cable management products in Middle east, African and European markets for the past 10 years.
- ❖ All the products developed in SME are 100% **MADE IN INDIA**.
- ❖ SME is an ISO 9001:2015 certified in Quality Management System which enables us to cater our clients with impeccable quality of products and services. Our major aim is to maintain technical excellence of the existing products along with new product innovation.
- ❖ **SME is an “One-Stop Solution” company.**

WHY US??

We have been catering our valuable clients with quality emphasized products and services in stipulated time which makes us stand apart from our competition. We have always been one step ahead when it comes to quality as compared to our competition.

- ❖ Complete technical knowledge about cable cleat which enables us to suggest our clients regarding cable cleat selection.
- ❖ Supportive to client branding on cleats.
- ❖ Complete product design to packaging system.
- ❖ Inhouse tool room setup makes all the moulds and tools in affordable prices.
- ❖ Manufacturing excellence.
- ❖ Quality analysts and R & D department for enhancing quality standards.
- ❖ Ethical business operations.
- ❖ Cordial Management department for customers queries.
- ❖ Affordable pricing.
- ❖ Meeting our delivery deadlines.
- ❖ Prompt response.

OUR MISSION

Our mission is to become a one stop shop company for cable management system and continue to provide our clients with impeccable quality products and services conforming with the international standards.

QUALITY POLICY

“The Staff and Management at Shree Mahalaxmi Enterprises (SME) are committed to consistent provision of quality products and services that will satisfy the demands and expectations of customers by continual improvement of the Quality Management System and conforming to the international standards and prevailing codes of practice.”

Vivek Telang
(C.E.O)

INDEX

SR. NO.	PRODUCT DESCRIPTION		PAGE NO.	SR. NO.	PRODUCT DESCRIPTION		PAGE NO.
1	TWO BOLT CABLE CLEAT		2	8	COMB BUSBAR		9
2	SINGLE BOLT CABLE CLEAT		3	9	HEAT SHRINK BUSBAR INSULATION SLEEVE		10
3	ALUMINIUM TWO BOLT CABLE CLEAT		4	10	BUSBAR INSULATION COVER		11
4	ALUMINIUM TREFOIL CABLE CLEAT ATFC (SP)		5	11	CABLE MANAGEMENT ACCESSORIES ALUMINIUM FERRULES (IN LINE CONNECTORS)		12
5.	ALUMINIUM CLAW CABLE CLEAT (ACC)		6	12	CABLE MANAGEMENT ACCESSORIES BACK UP RING		12
6	FASTENERS		7	13	CABLE MANAGEMENT ACCESSORIES ANTI BIRD SPIKE		13
7	CABLE JOINTING KIT		8	14	CABLE MANAGEMENT ACCESSORIES FRP TRAYS		13

TWO BOLT CABLE CLEAT

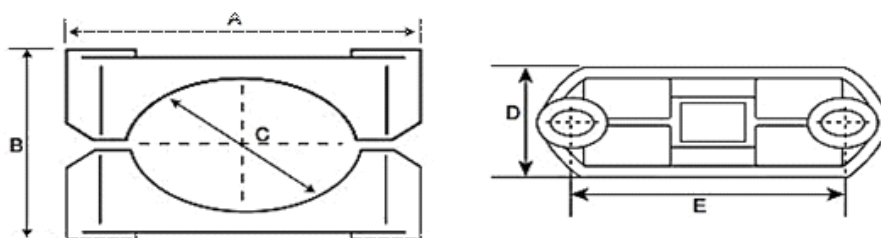


Technical data:

1. Material: Nylon 06, Nylon 30%GF, LSOH Polymer.
2. Operating Temperature: -40°C to 120°C.
3. Two-piece, two fixing designs.
4. Can be double stacked on common fixing.
5. UV Resistant.
6. Resistant to corrosive environments.
7. Weather and Oil resistant.
8. Suitable for 50 to 125mm cable diameter.
9. Colour: Black.

Description:

1. SME Two Bolt Nylon Cable Cleat are suitable for 50mm to 125mm cable diameters.
2. These Two bolt cleats are used for clamping LV (low voltage), MV (medium voltage), HV (high voltage) cables.



Data Sheet

Model	CABLE DIA (C)		CLEAT DIAMENTIONS (in mm)				Fixings
	MIN (in mm)	MAX (in mm)	A	B	D	E	
SME- DB-01	50	58	99	79	45	80	M10
SME- DB-02	56	64	101	93	45	80	M10
SME- DB-03	62	70	112	98	45	92	M10
SME- DB-04	68	76	121	102	46	102	M10
SME- DB-05	74	82	125	110	50	104	M10
SME- DB-06	80	88	126	118	50	104	M10
SME- DB-07	86	94	133	121	60	114	M10
SME- DB-09	115	125	197	158	66	148	M12

★ Standard tolerance +- 2% applied

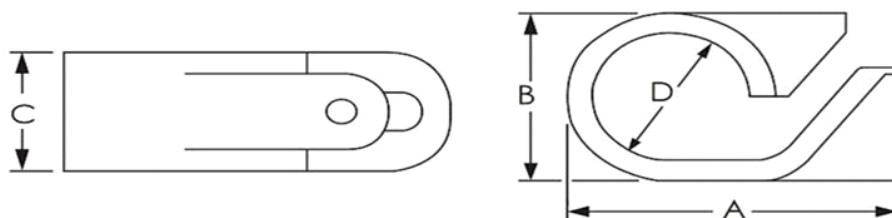
★ All dimensions are in mm

SINGLE BOLT CABLE CLEAT



Technical Data

1. Operating Temperature: -40°C to +60°C.
2. Material: Low-Density Polyethylene (LDPE), LSOH Polymer.
3. Size Range: 01 to 08
4. Applicable for 10.5mm – 51.1mm diameter cables.
5. One-piece single fixing design.
6. Can be double stacked on a single fixing.
7. UV Resistant.
8. Resistant to Oils.
9. Weather Resistant.
10. Colours Available: Black, Grey, White.



Data Sheet

Model	A	B		C	D	
		MIN	MAX		MIN	MAX
SME- SB-01	32	15	18	12	10.5	14.5
SME- SB-02	35	17	22	14	12.2	16.7
SME- SB-03	41	21	26	16	14.6	19.8
SME- SB-04	49	25	31	18	17.7	24
SME- SB-05	55	30	37	21	21.7	28.5
SME- SB-06	61	35	43	22	26.2	34.2
SME- SB-07	74	42	52	24	31.9	41.6
SME- SB-08	87	50	62	25	39.3	51.1

★ Standard tolerance +- 2% applied

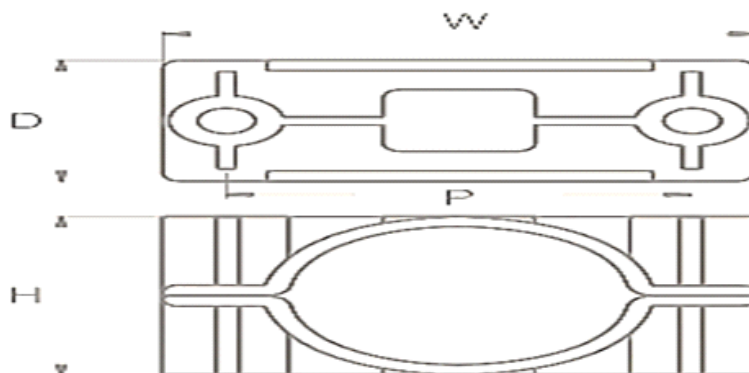
★ All dimensions are in mm

ALUMINIUM TWO BOLT CABLE CLEAT (ATC)



Technical data:

1. Material Used: LM6 Aluminium Alloy.
2. Operating Temperature: -60°C to 100°C.
3. Two-piece, two fixing designs.
4. Can be double stacked on common fixing.
5. Suitable for 48 to 140mm cable diameter.
6. Designed for all type of cables.
7. Coating: Epoxy.
8. Sizes: 01 to 14
9. Recommended for current rating above 1KVA.
10. Provided with rubber liners.
11. Colour: Silver



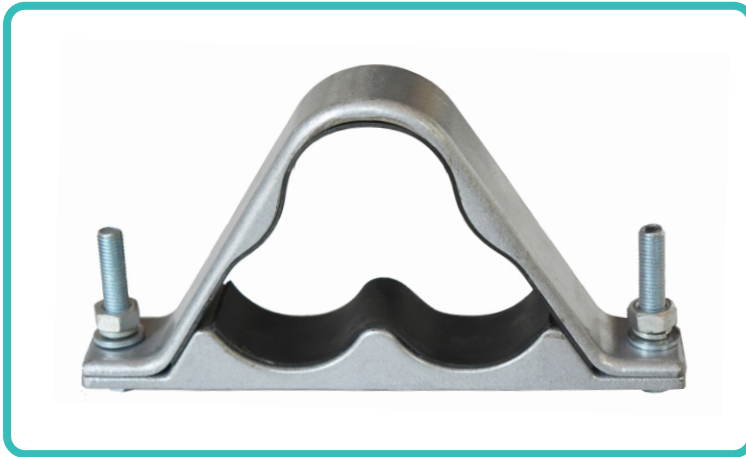
Data Sheet

Model	CABLE DIA (A)		CLEAT DIAMENTIONS (in mm)				Fixings
	MIN (in mm)	MAX (in mm)	W	H	D	P	
SME- ATC-01	48	55	199	64	45	84	M10
SME- ATC-02	51	57	96	64	59	76	M10
SME- ATC-03	57	64	96	75	49	76	M10
SME- ATC-04	64	70	96	84	64	118	M10
SME- ATC-05	70	76	134	90	64	114	M10
SME- ATC-06	76	83	142	102	64	114	M12
SME- ATC-07	83	89	154	114	64	114	M12
SME- ATC-08	89	95	154	114	64	114	M12
SME- ATC-09	95	101	154	120	76	126	M12
SME- ATC-10	101	108	169	134	76	140	M12
SME- ATC-11	108	114	169	140	76	149	M12
SME- ATC-12	115	125	185	131	63	156	M12
SME- ATC-13	125	135	190	140	70	160	M12
SME- ATC-14	135	140	195	155	85	165	M12

★ Standard tolerance +/- 2% applied

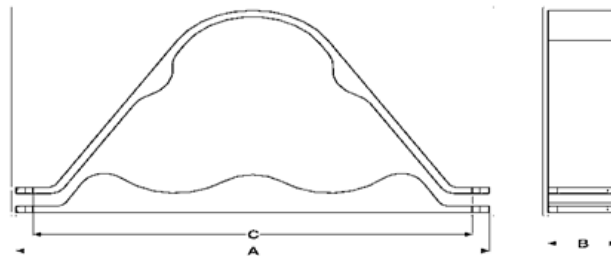
★ All dimensions are in mm

ALUMINIUM TREFOIL CABLE CLEAT ATFC (SP)



Technical data:

1. Material Used: LM6 Aluminium Alloy.
2. Operating Temperature: -60°C to 90°C.
3. Suitable for 15mm to 155mm cable diameter.
4. Suitable for LV, MV, HV cables.
5. Provided with rubber liners.
6. Coating: Epoxy
7. Two piece, two bolt fixing design.
8. Sizes: 01 to 08.
9. Colour: Silver.
10. Recommended above 1KVA.



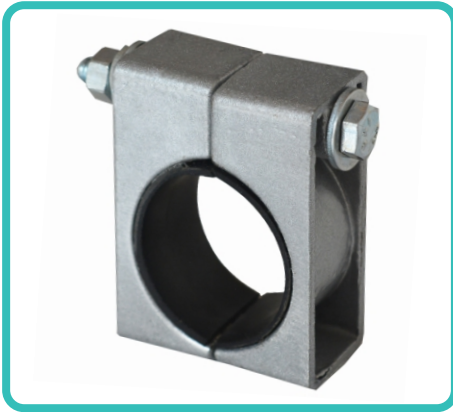
Data Sheet

Model	CABLE DIA		A	B	C
	MIN (in mm)	MAX (in mm)			
SME- ATFC(SP)-01	15	30	108	30	80
SME- ATFC(SP)-02	30	45	151	30	120
SME- ATFC(SP)-03	45	60	185	40	151
SME- ATFC(SP)-04	60	75	226	40	193
SME- ATFC(SP)-05	75	90	267	40	235
SME- ATFC(SP)-06	90	107	319	50	282
SME- ATFC(SP)-07	107	129	390	57	352
SME- ATFC(SP)-08	129	155	455	57	397

★ Standard tolerance +- 2% applied

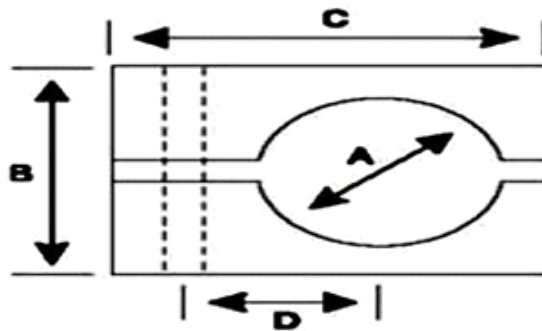
★ All dimensions are in mm

ALUMINIUM CLAW CABLE CLEAT (ACC)



Technical data:

1. Material Used: LM6 Aluminium Alloy.
2. Operating Temperature: -60°C to 100°C.
3. Suitable for 10 to 51 mm cable diameter.
4. Coating: Epoxy
5. Provided with rubber liners.
6. Sizes: 01 to 09
7. Colour: Silver
8. Two-piece single fixing design.



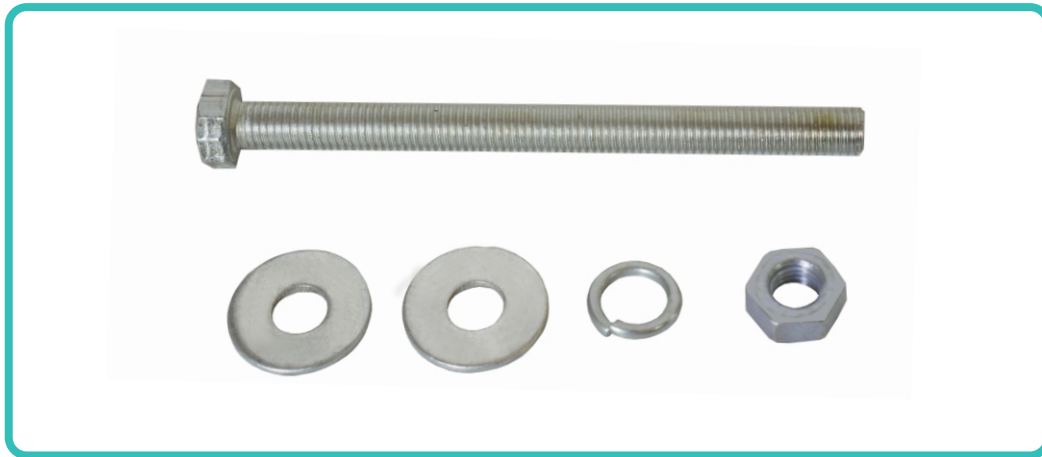
Data Sheet

Model	CABLE DIA (A)		B	C	D
	MIN (in mm)	MAX (in mm)			
SME- ACC-01	10	13	21	38	16
SME- ACC-02	13	16	21	38	16
SME- ACC-03	16	19	24	41	18
SME- ACC-04	19	22	27	44	19
SME- ACC-05	22	25	30	48	21
SME- ACC-06	25	32	32	59	24
SME- ACC-07	32	38	46	70	28
SME- ACC-08	38	44	52	72	35
SME- ACC-09	44	51	56	78	38

★ Standard tolerance +/- 2% applied

★ All dimensions are in mm

FASTENERS



Technical data:

1. We supply all fasteners required for cable cleats (Plastic & Aluminium cleats).
2. Material of fasteners available with us:
 - i) Stainless Steel 304
 - ii) MS GI plated.
3. Provision of fastener kit compatible with the cleats.
4. Fastener kit contains:
 - i) One bolt (M4, M6, M8, M10, M12) with various lengths (60,75,100,130,150,180,200) mm according to cleats.
 - ii) One Nut (M4, M6, M8, M10, M12).
 - iii) One Spring Washer- flat type (M4, M6, M8, M10, M12).
 - iv) Two Plain Washer (M4, M6, M8, M10, M12).
5. Fastener kits required for fixing SME cleats:

Data Sheet

Sr. No.	CABLE DIA	No. of fastener kits required
01	Nylon / LSOH Two Bolt Cable Cleat	2
02	LDPE / LSOH Single Bolt Cable Cleat	1
03	Aluminium Two Bolt Cable Cleat (ATC)	2
04	Aluminium Trefoil Cable Cleat ATFC (SP)	2
05	Aluminium Claw Cleat (ACC)	1

CABLE JOINTING KIT

Description:

- ❖ SME Cast resin joints are made from high quality polyurethane-based resin material.
- ❖ Its unique formulation replaces the cable outer jacketing during cable splicing or cable jointing.
- ❖ SME jointing kits are suitable for low voltage cable jointing of XLPE, EPR, PVC or PILC insulation with voltage level 600/1000V up to 3.3kV and is rated for continuous use at 90°C and with overload rating up to 130°C.
- ❖ Our kits are specially designed for Oil, Petrochemical, Gas, Telecom, Railway, and Industrial cables.
- ❖ Applicable to Power cables, Control cables, Instrumentation cables.
- ❖ 14 kits developed according to cable properties.

Features:

1. Flame retardant
2. Resistant to Arc, UV and Ozone.
3. Low exotherm.
4. Excellent sealing properties.
5. Low water absorption.
6. Excellent insulating properties.



Selection Chart:

Product Code	CABLE SELECTION DETAILS			
	1 Core (Sq. mm)	2 Core (Sq. mm)	3 Core (Sq. mm)	3.5/4 Core (Sq. mm)
SME/CJK/01	up to 35	1.5 to 4.0	1.5 to 4	1.5 to 2.5
SME/CJK/02	50 to 70	6 to 10	6 to 10	4 to 6
SME/CJK/03	95 to 120	16 to 35	16 to 25	10 to 16
SME/CJK/04	150 to 185	50 to 70	35 to 70	25 to 35
SME/CJK/05	225 to 240	95	70	50
SME/CJK/06	300	120 to 150	95	70
SME/CJK/07	400 to 500	-	120 to 150	95
SME/CJK/08	630	-	185	120 to 150
SME/CJK/09	800	-	225	185
SME/CJK/10	1000	-	240	225
SME/CJK/11	-	-	300	240
SME/CJK/12	-	-	400	300
SME/CJK/13	-	-	-	400
SME/CJK/14	-	-	-	500

Kit Contents:

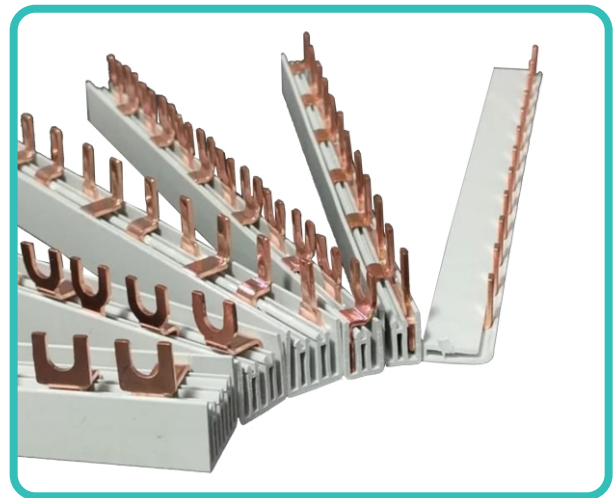
- ❖ Outer Shell (HIPS and PC both available).
- ❖ Polyurethane Resin and hardener in two-part polyethylene bag with rubber separator.
- ❖ Sponge sheet for cable entry.
- ❖ Cleaning tissue.
- ❖ Binding wire.
- ❖ Aluminium Back up ring.
- ❖ Aluminium ferrules.
- ❖ Aluminium cable.
- ❖ Hose clip.
- ❖ Cable spacers.
- ❖ Mould holding clip.
- ❖ Adhesive & non-adhesive tape.
- ❖ Installation Instruction manual.

COMB BUSBAR

- ❖ Comb busbar is essentially used in power distribution to electrical components.
- ❖ It helps in restraining wired connection.
- ❖ Comb busbar gives an organised wiring in electrical panels with assembly of MCB and ELCB.
- ❖ SME has two types of comb busbars:
 - i) Pin type
 - ii) Fork type.
- ❖ The plastic profile used in comb busbar is made out Flame retardant PVC material.
- ❖ As we have our own extrusion plant, comb busbar is manufactured inhouse.
- ❖ Supportive to client branding on busbar.
- ❖ Comb busbar we provide are 100% MADE IN INDIA.

Features:

- 1) Provides good conductivity.
- 2) Reliable
- 3) Easy installation.
- 4) Universal for all MCB.
- 5) Length is customisable according to client requirements.
- 6) Material: FR PVC Plastic profile & Copper.



Sizes available with us:

Sr. No.	Bus Bar	Specification
01	SME/CBBP/1P	1 Phase & Length: 1 mtr
02	SME/CBBP/2P	1 Phase + N & Length: 1 mtr
03	SME/CBBP/3P	3 Phase & Length: 1 mtr
04	SME/CBBP/4P	3 Phase + N & Length: 1 mtr
05	SME/CBBF/1P	54 pole & Length: 1 mtr
06	SME/CBBF/2P	54 pole & Length: 1 mtr
07	SME/CBBF/3P	54 pole & Length: 1 mtr
08	SME/CBBF/4P	56 pole & Length: 1 mtr

HEAT SHRINK BUSBAR INSULATION SLEEVE

Description:

- ❖ We have developed heat shrinkable busbar insulation sleeve are crosslinked; non-tracking sleeve manufactured from high quality polyolefin material.
- ❖ SME sleeves are designed to insulate busbar systems, conductors, IPS tubes up to 36kV and protects it against accidental flash-over.

Features:

1. For electrical insulation up to 36kV.
2. Prevents busbar from chemical corrosion effected by strong acid, alkali, salt etc.
3. High di-electric strength.
4. UV stabilised.
5. ROHS compliance.
6. Halogen free.
7. Customisation in length is possible.



Selection Chart:

Product Code	Supplied ID (mm)	Recovered ID (mm)	Recover Thick (mm)	Length (mtr)
up to 24 kV				
SME/MB- 25/10	25	10	2.0	25
SME/MB- 30/11	30	10	2.0	25
SME/MB- 40/15	40	15	2.0	25
SME/MB- 48/18	48	18	2.0	25
SME/MB- 58/22	58	22	2.0	25
SME/MB- 80/27	80	27	2.0	25
SME/MB- 98/37	98	37	2.0	25
SME/MB- 120/38	120	38	2.0	15
SME/MB- 140/49	140	49	2.0	15
up to 36 kV				
SME/HB- 30/11	30	11	3.0	25
SME/HB- 40/15	40	15	3.0	25
SME/HB- 48/18	48	18	3.0	25
SME/HB- 58/22	58	22	3.0	25
SME/HB- 80/27	80	27	3.0	15
SME/HB- 98/37	98	37	3.0	15
SME/HB- 120/38	120	38	3.0	15
SME/HB- 140/49	140	49	3.0	15

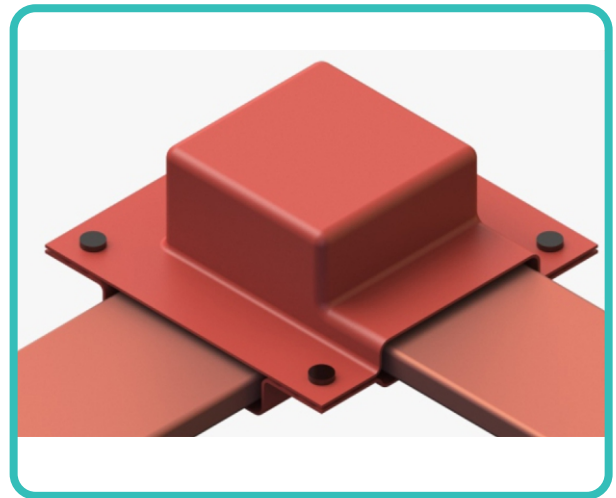
BUSBAR INSULATION COVER

Description:

- ❖ SME covers are designed to protect and insulate energized busbar connection from flash overs due to accidental contact.
- ❖ It provides reduction in air clearance which helps designing compact panels, thereby reduces the material costs by saving in busbar length, sheet metal components etc.

Technical Data:

1. Material: Polyolefin
2. Suitable for indoor and outdoor applications up to 36kV.
3. Excellent electrical insulation.
4. Halogen free.
5. Operating temperature: 105°C.
6. REACH & ROHS Compliance.
7. Flash over protection on Tee, Elbow, and straight connections.
8. Easy to install.
9. High electrical strength.
10. UV, Chemical and Solvent resistant.
11. Low toxicity.



CABLE MANAGEMENT ACCESSORIES

ALUMINIUM FERRULES (IN LINE CONNECTORS)

Description:

- ❖ Material: Aluminium.
- ❖ Sizes: 01 to 14.
- ❖ Colour: Silver
- ❖ Suitable for 10 sqmm to 400 sqmm.
- ❖ Customisable in line connectors as per client requirements possible.
- ❖ All aluminium ferrules are manufactured in house.



Sizes:

Sr. No.	Product Code	Sizes (Sq mm)
01	SME/AF/01	10
02	SME/AF/02	16
03	SME/AF/03	25
04	SME/AF/04	35
05	SME/AF/05	50
06	SME/AF/06	70
07	SME/AF/07	95
08	SME/AF/08	120
09	SME/AF/09	150
10	SME/AF/10	185
11	SME/AF/11	225
12	SME/AF/12	240
13	SME/AF/13	300
14	SME/AF/14	400

BACK UP RINGS

Description:

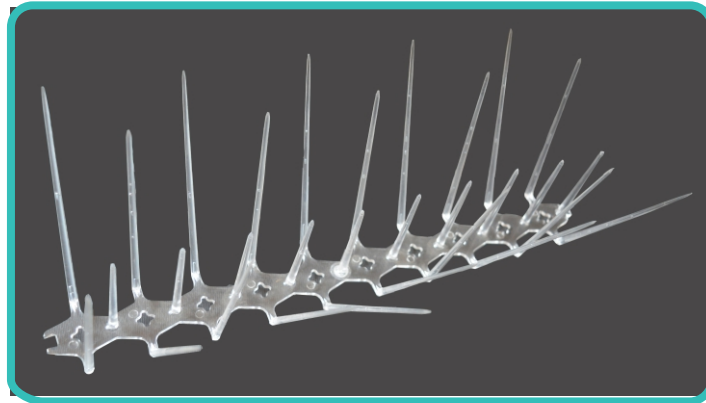
- ❖ Material: Aluminium
- ❖ Thickness: 1mm
- ❖ Size: 04
- ❖ Rings can be customized as per client requirements.
- ❖ Galvanised for longevity.
- ❖ Colour: Silver.



Sizes:

Sr. No.	Product Code	Specification
01	SME/BR/01	65 mm
02	SME/BR/02	60 mm
03	SME/BR/03	50 mm
04	SME/BR/04	40 mm

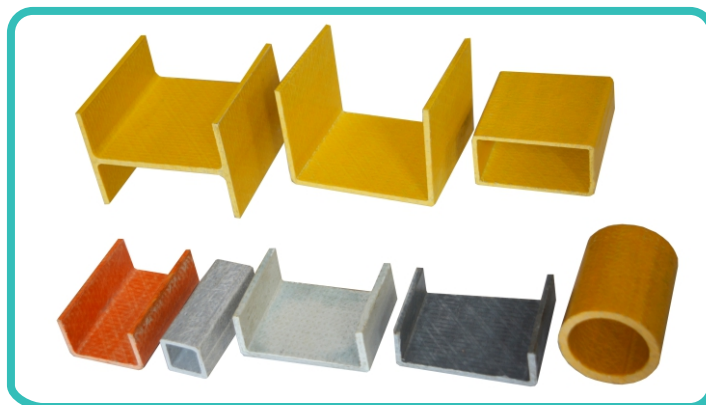
ANTI BIRD SPIKE



Description:

- ❖ Material: Polycarbonate
- ❖ Operating temperature: -20°C to 140°C.
- ❖ 10 slots provided for fixture.
- ❖ Length: 12 inches.
- ❖ Middle spikes - 10 nos of 60mm length.
- ❖ Inner spikes- 5 nos of 103mm length.
- ❖ Outer spikes- 5 nos of 113mm length.
- ❖ UV and weather resistant.
- ❖ Lock mechanism provided at ends for better installation.
- ❖ Colours: Customisable.

FRP TRAYS



Description:

- ❖ Material: FRP
- ❖ Applicable in power, control and data cabling.
- ❖ Flame retardant.
- ❖ UV Resistant.
- ❖ Ladder and Perforated type available.
- ❖ Non- Conductive.
- ❖ Corrosion & Weather resistant.
- ❖ Length of cable trays can be customised according to customer requirement.

INFRASTRUCTURE

We are equipped with:

- ❖ Plastics Injection Moulding Machinery Unit.
- ❖ Aluminium Die Casting Unit.
- ❖ Advance Tool Room Unit
- ❖ Printing Unit (Pad printing & Screen printing)
- ❖ Assembly and Packaging Unit
- ❖ 3D Printing setup (FDM, SLS, SLA)
- ❖ Plastics Extrusion Unit
- ❖ Aluminium Extrusion Unit
- ❖ Ultrasonic welding setup.

Certificate of Registration

This is to Certify that
Quality Management System of

M/S. SHREE MAHALAXMI ENTERPRISES

OFFICE ADDRESS - B-16/2/003, SHIV SAI SOCIETY, SHIV VALLABH ROAD,
ASHOK VAN, BORIVALI (E), MUMBAI - 400066, MAHARASHTRA, INDIA.

FACTORY ADDRESS - 3/15, RAM MANDIR INDUSTRIAL ESTATE, RAM
MANDIR ROAD, NEAR SHARMA ESTATE, GOREGAON (E), MUMBAI - 400063,
MAHARASHTRA, INDIA.

has been assessed and found to conform to the requirements of
ISO 9001:2015
for the following scope :

MANUFACTURER, SUPPLIER AND EXPORTER OF,
1. PLASTICS INJECTION MOULDED COMPONENTS AND MOULDS.
2. CABLE MANAGEMENT PRODUCTS SUCH AS, PLASTICS CABLE CLEATS
ALUMINIUM - CABLE CLEATS, GLANDS, LUGS, CABLE TIES, CABLE TRAY.
3. AUTO PARTS AND MACHINING COMPONENTS.
4. IMPRESSION PRINTING ON PRODUCT

Certificate No	: 22IQJY48/R2	Issuance Date	: 24/02/2023
Initial Registration Date	: 04/03/2022	2nd Surv. Due	: 04/02/2024
Date of Expiry	: 03/03/2025		

Director

AQG GLOBAL LLC

ACCREDITED
Management Systems
Certification Body
MSCB-119

**MEMBER OF MULTILATERAL
RECOGNITION ARRANGEMENT**

AQG GLOBAL LLC
Head Office: Office No. 02, Ground Floor, Sharjah Media City, Sharjah, UAE. e-mail: info@aqgworld.com.
Key Location: A-60, Sector - 2, Noida, Uttar Pradesh, 201301, India.
*Validity of the Certificate is subject to successful completion of surveillance audit on or before of due date. (In case surveillance audit is not allowed to be conducted, this certificate shall be suspended/withdrawn).
Certificate Verification: Please Re-check the validity of certificate at <http://www.aqgworld.com/activeclients.aspx> or www.aqgworld.com at Active Clients.
Certificate is the property of AQG Global LLC and shall be returned immediately when demanded.



Contact us



Unit 3/15, Ram Mandir Industrial Estate,
Ram Mandir Road, Goregaon East,
Mumbai: 400063, India



(+91) 9820247600
(+91) 9820247696
(+91) 9820247626



info@smentp.com
www.smentp.com